

DOCUMENT RESUME

ED 440 982

TM 030 768

AUTHOR Howard, Daniel L.
TITLE Dropout Report, 1998-1999.
INSTITUTION Wake County Public School System, Raleigh, NC. Dept. of Evaluation and Research.
REPORT NO WCPSS-DER-00.13
PUB DATE 2000-02-00
NOTE 52p.; For other reports from the Wake County Public School System, see TM 030 767-769.
PUB TYPE Numerical/Quantitative Data (110) -- Reports - Descriptive (141)
EDRS PRICE MF01/PC03 Plus Postage.
DESCRIPTORS *Data Analysis; Dropout Rate; Dropout Research; *Dropouts; Educational Trends; *High School Students; High Schools; Research Methodology; Trend Analysis
IDENTIFIERS *Wake County Public School System NC

ABSTRACT

In the Wake County, North Carolina, Public School System, there was a duplicated total of 1,230 students who dropped out of school. Of these, 4 were in grades K-6, and the rest were in grades 7-12. These students were first-time dropouts or had dropped out in previous years (duplicated dropouts). There had been a steady decline in the dropout rate in Wake County schools from 1993-1994 to 1997-1998, but the percentage of dropouts increased between 1997-1998 and 1998-1999. This corresponds to a statewide increase in the dropout rate, something that may be due in part to a new assessment approach that reports students who transfer to community colleges to receive the General Educational Development (GED) certificate as dropouts. For grades 9 through 12, the Wake County dropout rate is 4.7%, representing 1,205 students. The largest percentage of dropouts in the school district has come from the ninth grade every year. The 463 ninth-grade dropouts in 1998-1999 constituted 5.6% of the school district's ninth-grade population. Seventy-one percent of the ninth-grade dropouts were over-age, and attendance problems continued to be the major reason why students dropped out. Three attachments contain summaries for individual high schools and a discussion of data collection and reporting procedures. (Contains 10 figures, and 3 tables.) (SLD)

1998 - 1999

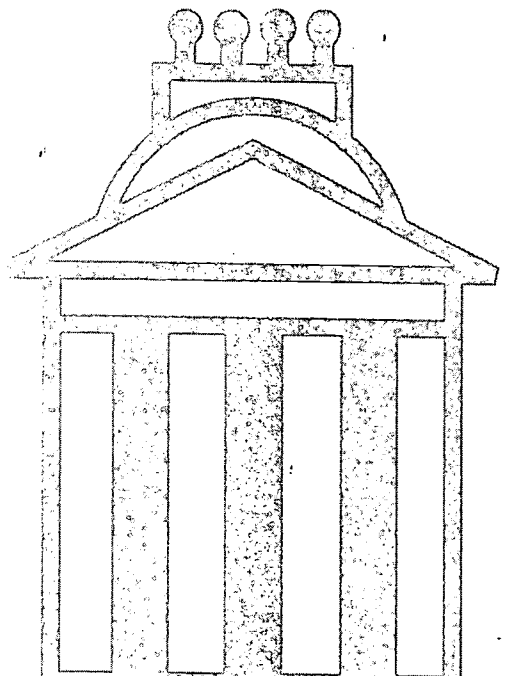
ED 440 982

PERMISSION TO REPRODUCE AND
DISSEMINATE THIS MATERIAL HAS
BEEN GRANTED BY

D. H. Rinne

TO THE EDUCATIONAL RESOURCES
INFORMATION CENTER (ERIC)

1



U.S. DEPARTMENT OF EDUCATION
Office of Educational Research and Improvement
EDUCATIONAL RESOURCES INFORMATION
CENTER (ERIC)

This document has been reproduced as
received from the person or organization
originating it.

Minor changes have been made to
improve reproduction quality.

• Points of view or opinions stated in this
document do not necessarily represent
official OERI position or policy.

DROPOUT REPORT

Report No. 00.13
Department of Evaluation and Research
February, 2000

BEST COPY AVAILABLE

2

WAKE COUNTY PUBLIC SCHOOL SYSTEM

TM030768

WAKE COUNTY PUBLIC SCHOOL SYSTEM 1998-99 DROPOUT REPORT

TABLE OF CONTENTS

REPORT SUMMARY

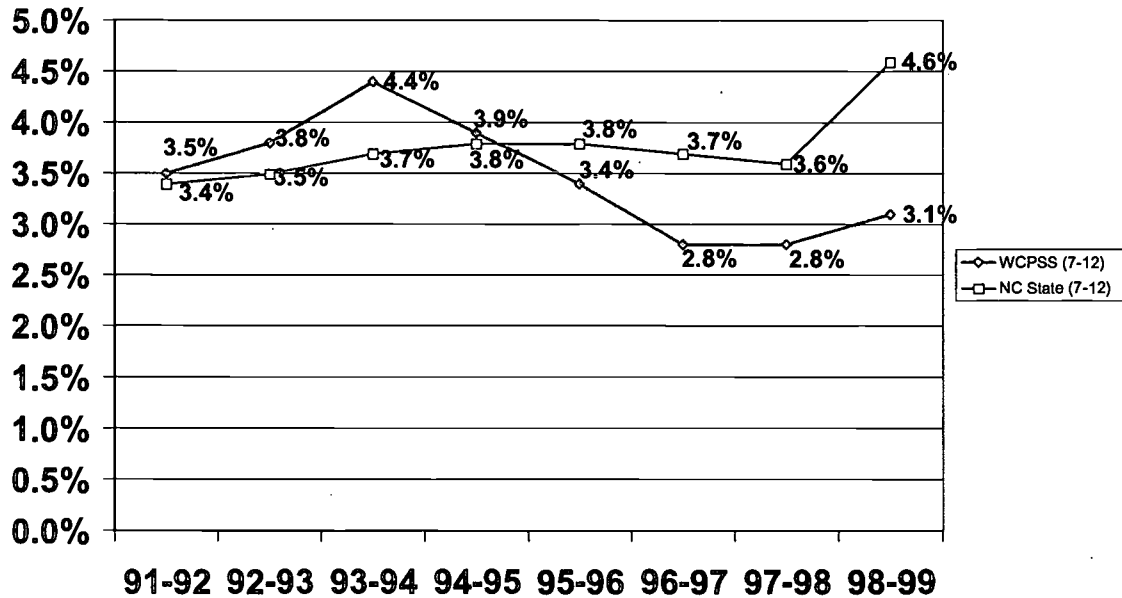
INTRODUCTION	1
Calculating Dropout Rates	1
WHO'S DROPPING OUT?	2
Dropout Rates	2
Percentage of Dropouts by Grade Level	3
Dropout Rate by Race	3
Dropout Rates by High School	4
A CLOSER LOOK AT WCPSS DROPOUTS	5
Percentage of Dropouts by Grade Level	5
Dropouts by Grade Over Time	5
Dropouts by Age	6
Withdrawal Reasons	7
Dropout Rates Among Comparable School Systems	8
ATTACHMENTS	9
WCPSS High School Summary.....	10-11
WCPSS Individual High School Summaries	12-43
WCPSS Procedures for Collecting and Reporting Dropout Data.....	44
References	46

WAKE COUNTY PUBLIC SCHOOL SYSTEM 1998-99 DROPOUT REPORT

REPORT SUMMARY

The 1998-99 duplicated dropout rate is the percent of first-time dropouts (those who dropped out for the first time in 1998-99) and previous year dropouts (those who dropped out before 1998-99, returned to school in 1998-99, and dropped out again). There had been a steady decline in the WCPSS dropout rate for grades 7-12 from 1993-94 to 1997-98. However, the percentage of WCPSS dropouts increased between 1997-98 and 1998-99. The WCPSS dropout increase also corresponded to a dramatic increase in dropouts reported across the state. (Figure 1). These increases may be due to a rule change in the assessment of dropout rates which now reports students who transfer to community colleges to receive their GED as dropouts. In the past, these students were referred to as transfers.

Figure 1. State and WCPSS Duplicated Dropout Rate for Grades 7-12 between 1991 and 1999



At grades 9-12, the WCPSS dropout rate is 4.7% and represents 1,205 students. The largest percentage of dropouts in the WCPSS (37% of the total 1,230 grade 7-12 dropouts) has come from the 9th grade every year since 1991-92. The 463 9th grade dropouts in 1998-99 represented 5.6% of the WCPSS 9th grade student population.

- The percentage of 9th grade dropouts decreased between 1997-98 and 1998-99, while the percentage of 10th, 11th, and 12th grade dropouts increased during the same time period. Again, the community college rule change may adversely affect the number of older dropouts, because a student must be at least 16 years old and have been a dropout for at least 6 months before they are eligible to enroll in community college.
- Seventy-one percent of the 9th grade dropouts were over-age (16 years or older). The typical age for a 9th grade student is 14 or 15 years old. The percentage of dropouts who are older than is typical for their grade declines across grade level (56% at grade 10, 43% at grade 11, and 21% at grade 12). The most common reason students are older than their appropriate grade is retention in a prior grade. National research indicates students older than the average age for their grade are more likely to drop out of school.
- Attendance problems continued to be the major reason why students dropped out. Sixty-four percent of the dropouts have this as the primary reason for dropping out. Poor attendance may be a symptom of other problems that are not recorded such as failing grades on coursework that leads to non-attendance. Academic problems was reported as a reason for dropping out 13 percent of the time.

INTRODUCTION

Calculating Dropout Rates

In the Wake County Public School System (WCPSS), during 1998-99 (including summer school), there was a duplicated total of 1,230 students who dropped out of school. Of these 1,230 students:

- four students were in grades K-6; and,
- 1,226 students were in grades 7-12 who were first-time dropouts or dropped out in previous years.

Calculating Dropout Rates

The State of North Carolina (NC) uses an “event count” to count the number of dropouts each year for the 12-month period which begins on the first day of the academic year and ends on the last day of the following summer vacation. All school systems in NC define a dropout as an individual who:

1. was enrolled in school at some time during the previous reporting year;
2. was not enrolled on the 20th day of the current year;
3. has not graduated from high school or completed a state or district-approved educational program; and
4. does not meet any of the following exclusions:
 - transferred to another public school district, private school, home school, or state/district-approved educational program (transfer to a community college to obtain a GED is no longer excluded);
 - temporarily absent due to suspension or school-approved illness; or
 - death.

The dropout rate calculated by the NC Department of Public Instruction (DPI) for each school system reflects the duplicated count of students in grades 7-12 who dropped out the previous year. Using the 20th day membership figures, DPI calculates dropout rates for each local education agency according to the following formula:

$$\frac{\text{\# of 1998-99 Dropouts}}{(\text{1998-99 20}^{\text{th}}\text{-Day} + \text{1999-2000 20}^{\text{th}}\text{-Day})/2 + \text{\# of 1998-99 Dropouts}}$$

For example, the WCPSS rate calculation for grades 7-12 for 1998-99 was:

$$\frac{1,226}{(37,825 + 39,404)/2 + 1,226} = .0308 \text{ or } 3.1\%$$

Unless otherwise noted, the data and subsequent analyses contained within this report are based on the duplicated counts of dropouts from grades 7-12 (1,226 students).

Who's Dropping Out?

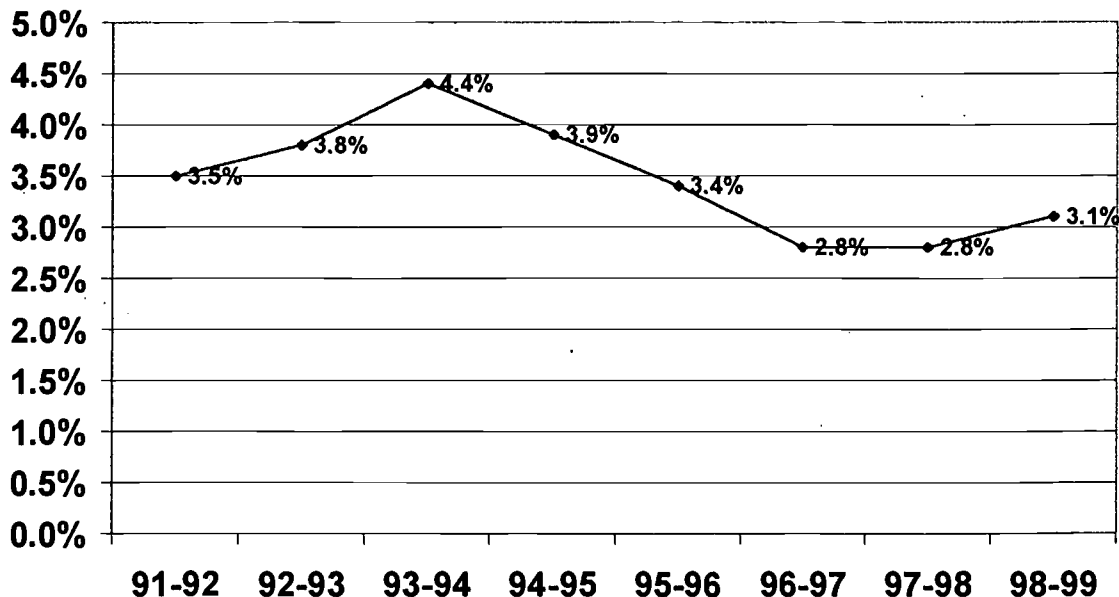
Dropout Rates

This section reports dropout rates and percentages relative to the overall student body of the Wake County Public School System (WCPSS). It is important to note that:

- rates are based on the average 20th-day membership for two years (e.g., the 1998-99 rates are based on the average of 1998-99 and 1999-2000 20th-day membership), and;
- percentages are based on the membership for one year (e.g., the 1998-99 percentages are based on the 1998-99 20th-day membership).

Although NC collects dropout data for all grades, K-12, NC calculates the dropout rates for only grades 7-12. The WCPSS dropout rate for grades 7-12 steadily declined from 1993 to 1998, however there was an increase from 1998 to 1999 (Figure 2). The percent change in dropouts From 1993-94 to 1996-97, dropouts decreased by 36%. There was no change in dropouts from 1996-97 to 1997-98. However, from 1997-98 to 1998-99 dropouts increased by 11%.

Figure 2. WCPSS Duplicated Dropout Percentages for Grades 7-12 Between 1991 and 1999



Percentage of Dropouts by Grade Level

As shown in Figure 3, the greatest percentage and number of students dropping out, except by a very narrow percentage in 1993-94, was in the 9th grade. This consistent pattern from year to year may occur because at the 9th grade level many students approach 16 years old and school attendance is not legally required after reaching this age. In addition, the first year of high school brings many changes in requirements and structures which some students may find difficult.

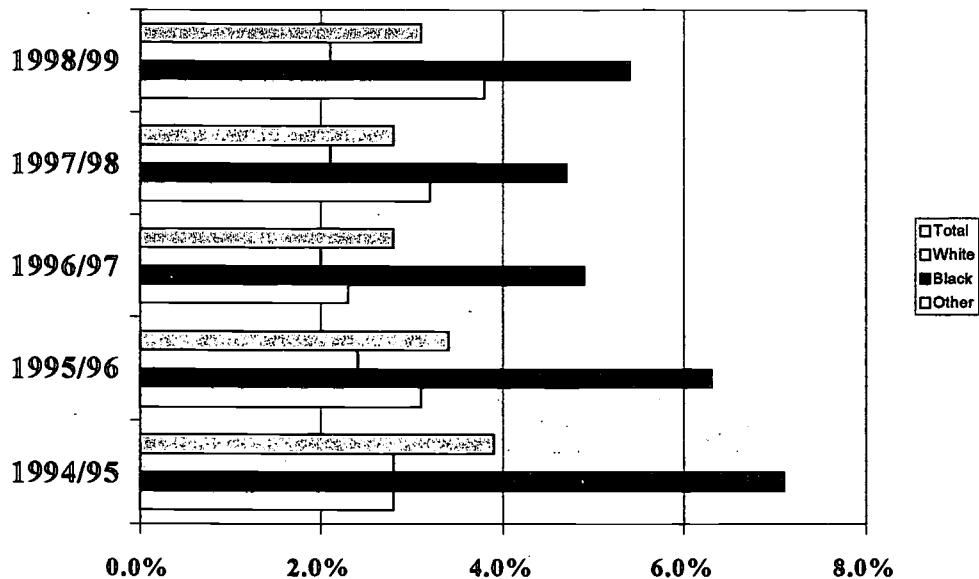
Figure 3. Dropouts by Grade from 1991 to 1999

Grade	Duplicated Count of Dropouts								Percent Dropping Out							
	91-92	92-93	93-94	94-95	95-96	96-97	97-98	98-99	91-92	92-93	93-94	94-95	95-96	96-97	97-98	98-99
7	37	17	11	14	6	7	12	9	0.7%	0.3%	0.2%	0.2%	0.1%	0.1%	0.2%	0.1%
8	62	18	18	20	21	11	24	12	1.2%	0.3%	0.3%	0.3%	0.3%	0.2%	0.4%	0.2%
9	375	402	469	445	461	407	418	463	6.4%	6.7%	7.3%	6.5%	6.4%	5.3%	5.2%	5.6%
10	265	264	386	332	272	262	269	318	5.4%	5.3%	7.4%	6.1%	4.8%	4.4%	4.2%	4.8%
11	102	197	224	217	186	117	216	256	4.6%	5.7%	6.6%	5.8%	5.0%	4.0%	3.9%	4.4%
12	102	197	224	217	186	117	140	169	2.5%	4.7%	5.3%	5.0%	4.2%	2.6%	2.9%	3.4%
7-12	1049	1158	1417	1304	1197	1015	1079	1226	3.5%	3.8%	4.4%	3.9%	3.4%	2.8%	2.8%	3.1%
9-12	950	1123	1388	1270	1170	997	1043	1205	4.9%	5.7%	6.7%	6.0%	5.3%	4.3%	4.2%	4.7%

Dropout Rate by Race

The dropout rates by race for grades 7-12 show steady decreases for students of all races from 1994-95 to 1996-97 (Figure 4). However, between 1997-98 and 1998-99, there was an increase in the percentage of dropouts among across all races of students, except for White students which remained constant from the prior year.

**Figure 4. WCPSS Duplicated Dropout Rates for Grades 7-12
Among Race from 1994-95 to 1998-99**



Dropout Rates by High School

The dropout rate for all WCPSS high schools (grades 9-12) was 4.7%. Five of the fourteen regular WCPSS high schools showed a decrease in their dropout rate during 1998-99 from the previous year (Figure 5). Eight of the fourteen showed an increase. Green Hope High School did not exist in 1997-98. Among the alternative schools, Longview High School showed a decrease in dropouts during 1998-99, while Phillips High School showed an increase in dropouts.

Figure 5. Dropouts by High School

High School	95-96		96-97		97-98		98-99	
	No.	Rate	No.	Rate	No.	Rate	No.	Rate
Apex	67	3.22%	72	3.32%	90	3.96%	93	4.13%
Athens Drive	67	3.87%	98	5.23%	87	4.75%	50	2.76%
Broughton	89	5.45%	43	2.64%	80	4.76%	86	5.05%
Cary	89	4.52%	77	3.72%	38	1.81%	95	4.64%
East Wake	160	8.92%	122	6.83%	115	6.52%	106	6.01%
Enloe	33	1.56%	41	1.79%	53	2.20%	74	3.02%
Fuquay-Varina	88	6.84%	60	4.36%	82	5.45%	83	5.20%
Garner	107	5.31%	108	5.47%	90	4.77%	92	4.80%
Leesville Rd.	49	2.80%	40	2.07%	38	1.83%	52	2.48%
Millbrook	126	6.01%	74	3.75%	109	5.76%	105	5.49%
Sanderson	111	5.71%	60	3.17%	76	4.05%	67	3.40%
S.E. Raleigh	NA*	NA*	NA*	NA*	31	2.16%	42	2.37%
Wake Forest-R	55	3.55%	66	4.18%	48	2.96%	115	7.15%
Longview**	20	--	10	17.39%	19	29.23%	10	21.05%
Phillips**	112	--	124	36.20%	87	27.88%	135	35.67%
Total	1173	5.3%	995	4.3%	1043	4.2%	1205	4.7%

* Southeast Raleigh High School had not been built at this time.

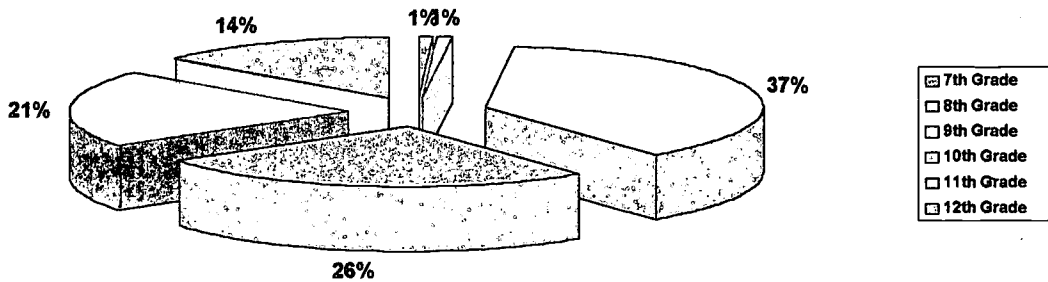
** Longview and Phillips are alternative schools serving special populations.

A Closer Look at WCPSS Dropouts

Percentage of Dropouts by Grade Level

Figure 6 shows the percentage of dropouts in each grade during 1998-99. The largest percent of dropouts were 9th graders (37%). Grades 7 and 8 accounted for only 2% of all dropouts. Dropouts who are seniors (12th grade) made up the next smallest percentage (14%).

Figure 6. Dropouts by Grade: 1998-99



Dropouts by Grade Over Time

The largest number and percentage of dropouts continue to be in the 9th grade. However, between 1997-98 and 1998-99, the percentage of 9th grade dropouts fell slightly, while there were increases in the percentage of dropouts in grades 10, 11, and 12. Again, this may be a result of the rule change that students who transfer to community colleges to obtain their GED are considered dropouts. Students in higher grades are more likely to be a part of this group because a student must be at least 16 years old and have been a dropout for at least 6 months prior to enrolling in a community college. Additional information on high school rates can be found in Attachments 1 and 2.

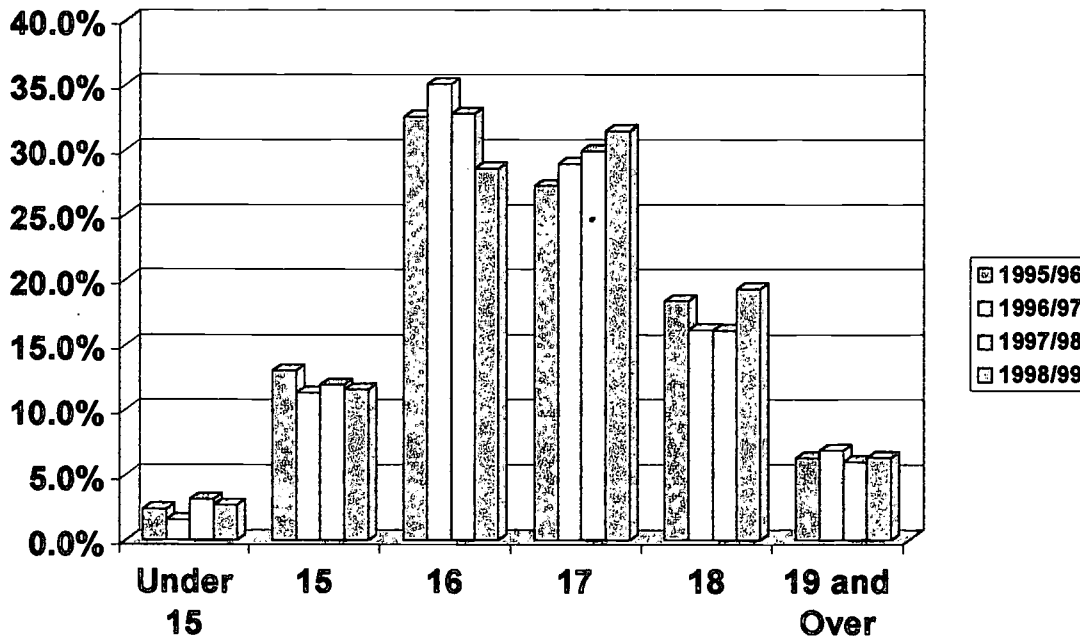
Figure 6. Dropouts by Grade and Percent of Total Dropouts: 1991-1999

Grade	91-92		92-93		93-94		94-95		95-96		96-97		97-98		98-99	
	(n=1,049)		(n=1,158)		(n=1,417)		(n=1,304)		(n=1,197)		(n=1,015)		(n=1,079)		(n=1,226)	
	No.	%	No.	%	No.	%	No.	%	No.	%	No.	%	No.	%	No.	%
7-8	99	9.4	35	2.2	29	2.0	34	2.6	27	2.3	18	1.8	36	3.3	21	2%
9	375	35.7	402	34.7	469	33.1	445	34.1	461	38.5	407	40.1	418	38.7	463	37.0
10	265	25.3	264	22.8	386	27.2	332	25.5	272	22.7	262	25.8	269	24.9	318	26.0
11	208	19.8	260	22.5	309	21.8	276	21.2	251	21.0	211	20.8	216	20.0	256	21.0
12	102	9.7	197	17.0	224	15.8	217	16.6	186	15.5	117	11.5	140	13.0	169	14.0

Dropouts by Age

Figure 7 shows that the majority of dropouts in 1997-98 were 16 or 17 years old (60.1%), which was also true in previous years. Dropouts under 15 years old decreased from the previous year, while dropouts 18 years old and older increased from the previous year. Again, this may be a result of the rule change that students who transfer to community colleges to obtain a GED are considered dropouts.

Figure 7. Dropouts by Age: 1995-1999



Dropouts tended to be older than other students in their grade (Figure 8). For instance, students in grade 9 are typically 14 or 15 years old; however, 71 percent of the 9th grade dropouts were age 16 years old and over. Fifty-six percent of 10th grade dropouts are 17 years old or older. Forty-three percent of 11th grade dropouts are 18 years old or older. Twenty-one percent of 12th grade dropouts are over 18 years old. The most common reason for students being older than

their appropriate grade is retention in a prior grade. National research indicates students older than average age for their grade are more likely to drop out of school.

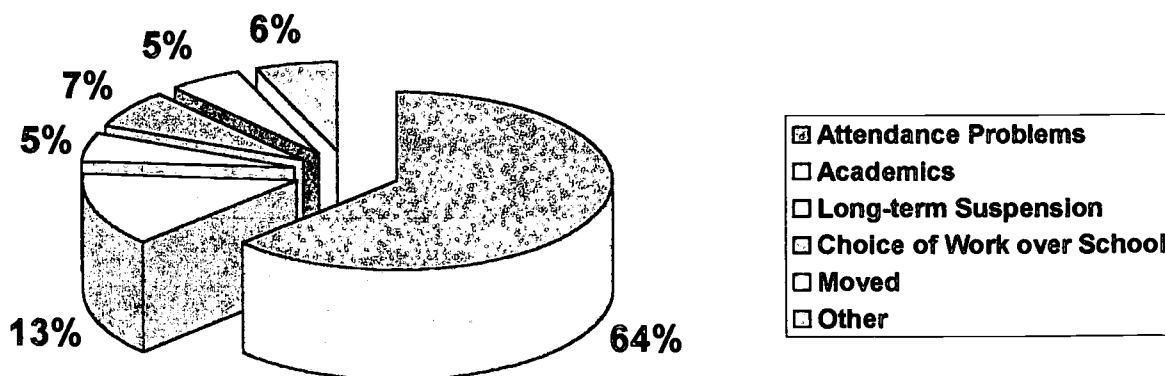
Figure 8. Dropouts by Age and Grade: 1998-99

Age	7th (n=9)		8th (n=12)		9th (n=463)		10th (n=318)		11th (n=255)		12th (n=169)	
	No.	%	No.	%	No.	%	No.	%	No.	%	No.	%
<16	9	100%	9	75%	131	29%	25	8%	0	0%	0	0%
16	0	0%	3	25%	190	41%	118	37%	41	16%	1	1%
17	0	0%	0	0%	116	25%	109	35%	105	41%	55	33%
18	0	0%	0	0%	23	5%	55	17%	82	32%	77	46%
>18	0	0%	0	0%	3	1%	11	4%	27	11%	36	21%

Withdrawal Reasons

Reasons for withdrawing from school are determined by the school guidance counselor through student exit interviews. The primary reason for dropping out reported in 1998-99 was attendance problems (64%) (see Figure 9). Poor attendance may be a symptom of other problems that are not recorded such as failing grades on coursework that leads to non-attendance. Academic problems was reported as the reason for dropping out 13 percent of the time.

Figure 9. Dropouts by Withdrawal Reasons: 1998-99



Dropout Rates Among Comparable School Systems

Dropout rates between 1997-98 and 1998-99 have increased unilaterally among comparable large, urban school systems (Figure 10). However, Mecklenberg County had a negligible increase between 1997-98 and 1998-99. Again, this increase may be due to the rule change in assessing dropouts that reports students who enroll in community college to obtain their GED as dropouts rather than transfers.

Figure 10. 7-12 Grade Dropout Rates Among School Systems: 1997-98 and 1998-99

School System	Number of Dropouts	Percent of Dropouts
Durham County		
1997-98	645	5.1%
1998-99	722	5.7%
Forsyth County		
1997-98	683	3.8%
1998-99	929	4.95%
Guilford County		
1997-98	852	3.3%
1998-99	1152	4.3%
Mecklenburg County		
1997-98	2279	5.4%
1998-99	2401	5.5%
Wake County		
1997-98	1079	2.8%
1998-99	1226	3.1%

ATTACHMENTS

ATTACHMENT 1:

WCPSS High-School Summary

Dropouts: 1995 – 1999

Dropouts by Race: 1998 - 1999

Dropouts by Gender, Age, Grade, and Withdrawal Reason: 1998 - 1999

ATTACHMENT 2:

WCPSS Individual High School Summaries

Dropouts: 1995 – 1999

Dropouts by Race: 1998 - 1999

Dropouts by Gender, Age, Grade, and Withdrawal Reason: 1998 - 1999

ATTACHMENT 3:

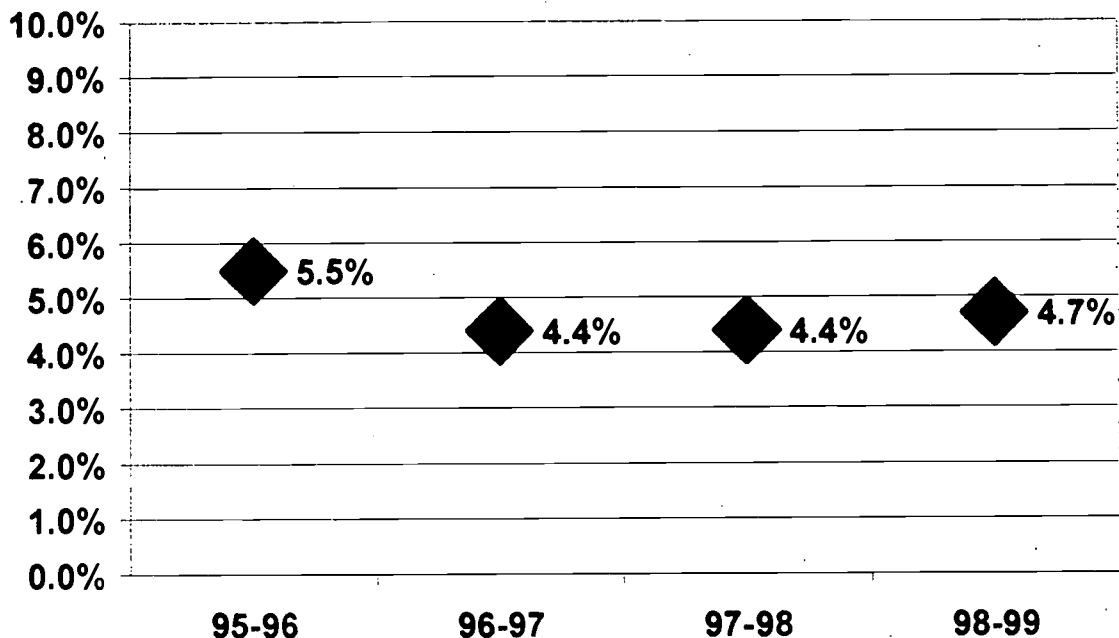
WCPSS Procedures for Collecting and Reporting Dropout Data

ATTACHMENT 1

WAKE COUNTY PUBLIC HIGH SCHOOLS

Total Dropouts (grades 9-12): 1,205
High School Dropout Rate: 4.7%

WCPSS High School Dropout Rate: 1995 - 1999



WCPSS High School Dropouts by Race: 1998 - 1999

RACE	Total	Percent
White	553	46%
Female	219	18%
Male	334	28%
Black	546	45%
Female	222	18%
Male	324	27%
Hispanic	70	6%
Female	31	3%
Male	39	3%
Asian	22	2%
Female	7	1%
Male	15	1%
Other	14	1%
Female	4	.5%
Male	10	1%

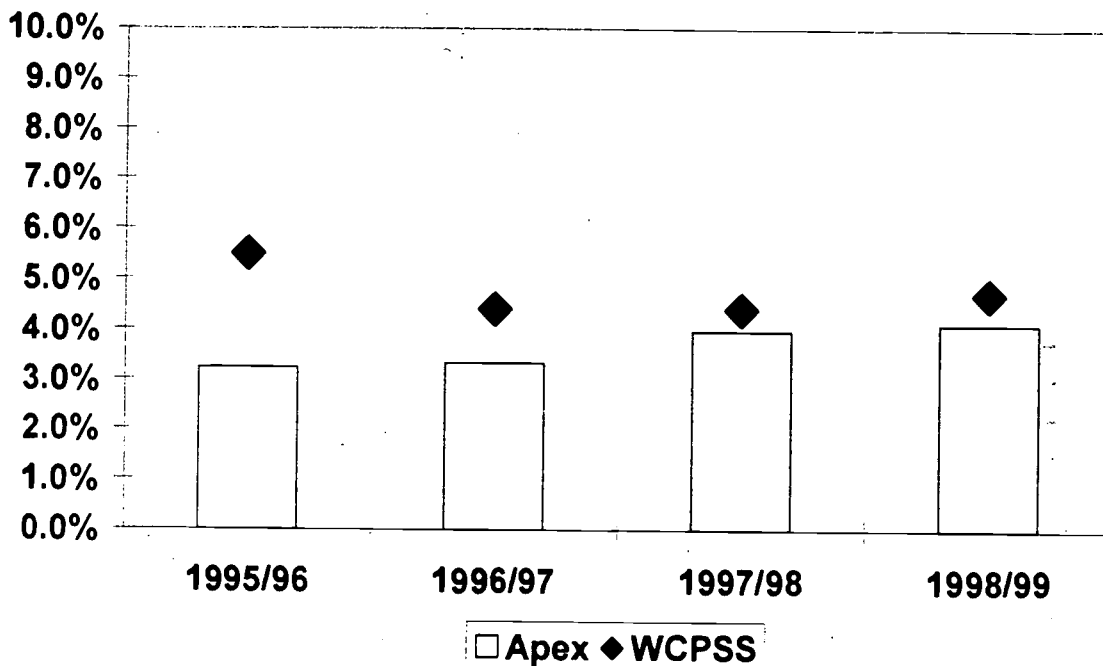
WAKE COUNTY PUBLIC HIGH SCHOOLS
Dropouts by Gender, Age, Grade,
And Withdrawal Reason
1998-99

GENDER	Total	Percent
Female	483	40%
Male	722	60%
AGE		
Under 15	19	2%
15 years old	137	11%
16 years old	350	29%
17 years old	385	32%
18 years old	238	20%
19 years old	65	5%
Over 19	12	1%
GRADE		
Grade 9	463	38%
Grade 10	318	26%
Grade 11	256	21%
Grade 12	169	14%
REASON		
Health Reasons	9	1%
Pregnancy	6	1%
Marriage	0	0%
Choice of Work over School	86	7%
Substance Abuse	0	0%
Incarcerated, Not Enrolled	13	1%
Employment Necessary	2	0%
Unstable Home Environment	4	.5%
Need to Care for Children	4	.5%
Runaway	10	1%
Moved, No Records Requested	64	5%
Academic Problems	162	14%
Discipline Problems	13	1%
Long-term Suspension	64	5%
Attendance Problems	759	63%
Expulsion	2	0%
School not meeting needs	1	0%
Other	6	1%

ATTACHMENT 2
APEX HIGH SCHOOL

Total Dropouts: 93
Dropout Rate: 4.13%

Apex H.S. and WCPSS Dropout Rates: 1995 - 1999



Apex High School Dropouts by Race: 1998 - 1999

RACE	Total	(n=93)
White	58	62.4%
Female	20	21.5%
Male	38	40.9%
Black	22	23.7%
Female	7	7.5%
Male	15	16.1%
Hispanic	8	8.6%
Female	2	2.2%
Male	6	6.5%
Asian	3	3.2%
Female	0	0.0%
Male	3	3.2%
Other	2	2.2%
Female	1	1.1%
Male	1	1.1%

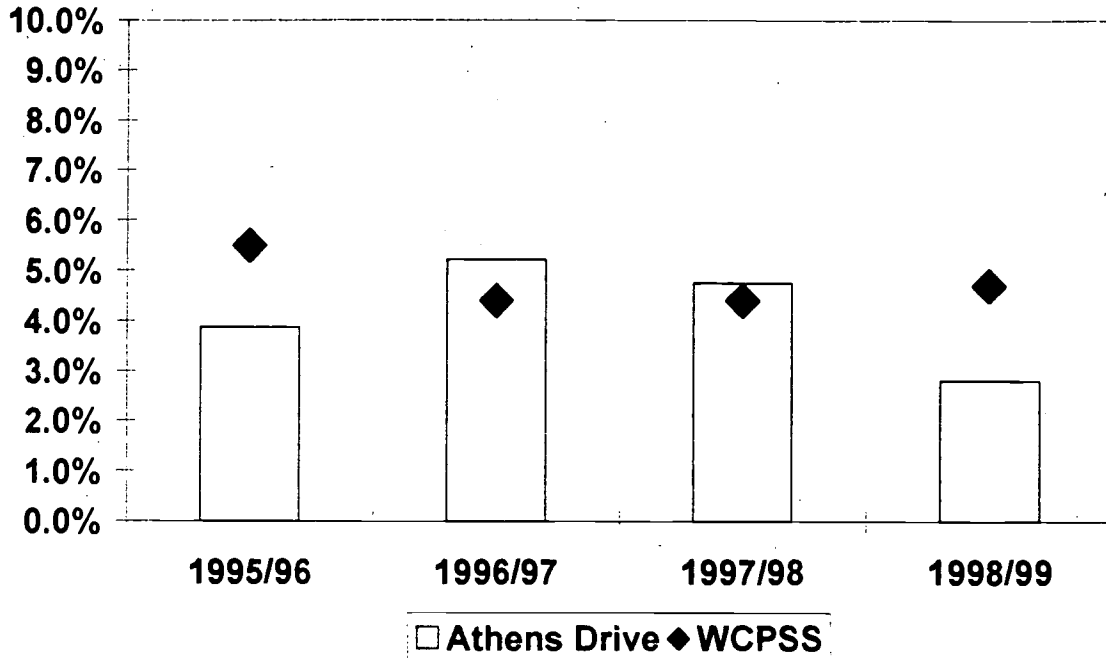
APEX HIGH SCHOOL
Dropouts by Gender, Age, Grade,
And Withdrawal Reason
1998-99

GENDER	Total	Percent
Female	30	32.3%
Male	63	67.7%
AGE		
Under 15	4	4.3%
15 years old	9	9.7%
16 years old	17	18.3%
17 years old	33	35.5%
18 years old	26	27.9%
19 years old	3	3.2%
Over 19	1	1.1%
GRADE		
Grade 9	30	32.3%
Grade 10	21	22.5%
Grade 11	28	30.1%
Grade 12	14	15.1%
REASON		
Health Reasons	1	1.1%
Pregnancy	1	1.1%
Marriage	0	0.0%
Choice of Work over School	8	8.6%
Substance Abuse	0	0.0%
Incarcerated, Not Enrolled	1	1.1%
Employment Necessary	1	1.1%
Unstable Home Environment	0	0.0%
Need to Care for Children	0	0.0%
Runaway	0	0.0%
Moved, No Records Requested	5	5.4%
Academic Problems	16	17.2%
Discipline Problems	0	0.0%
Long-term Suspension	2	2.2%
Attendance Problems	58	62.4%
Expulsion	0	0.0%
School Not Meeting Needs	0	0.0%
Other	0	0.0%

ATHENS DRIVE HIGH SCHOOL

Total Dropouts: 50
Dropout Rate: 2.76%

Athens Drive H.S. and WCPSS Dropout Rates: 1995-99



Athens Drive High School Dropouts by Race: 1998 - 1999

RACE	Total	(n=50)
White	15	30
Female	6	12
Male	9	18
Black	25	50
Female	10	20
Male	15	30
Hispanic	9	18
Female	5	10
Male	4	8
Asian	1	2
Female	0	0
Male	1	2
Other	0	0
Female	0	0
Male	0	0

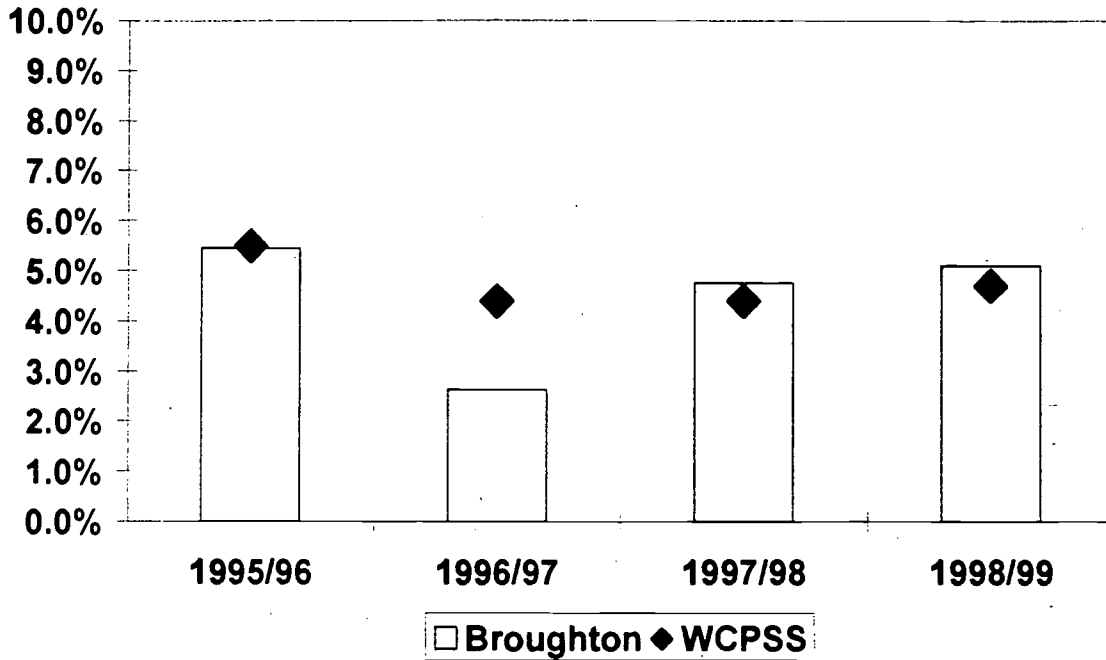
ATHENS DRIVE HIGH SCHOOL
Dropouts by Gender, Age, Grade,
And Withdrawal Reason
1998-99

GENDER	Total	Percent
Female	21	42
Male	29	58
AGE		
Under 15	0	0
15 years old	8	16
16 years old	15	30
17 years old	10	20
18 years old	12	24
19 years old	3	6
Over 19	0	0
GRADE		
Grade 9	23	46
Grade 10	17	34
Grade 11	5	10
Grade 12	5	10
REASON		
Health Reasons	1	2
Pregnancy	0	0
Marriage	0	0
Choice of Work over School	3	6
Substance Abuse	0	0
Incarcerated, Not Enrolled	0	0
Employment Necessary	0	0
Unstable Home Environment	0	0
Need to Care for Children	1	2
Runaway	1	2
Moved, No Records Requested	5	10
Academic Problems	6	12
Discipline Problems	0	0
Long-term Suspension	1	2
Attendance Problems	29	58
Other	3	6

BROUGHTON HIGH SCHOOL

Total Dropouts: 86
Dropout Rate: 5.05%

Broughton H.S. and WCPSS Dropout Rates: 1995-99



Broughton High School Dropouts by Race: 1998 - 1999

RACE	Total	(n=86)
White	34	39.5
Female	11	12.8
Male	23	26.7
Black	37	43.0
Female	13	15.1
Male	24	27.9
Hispanic	7	8.1
Female	1	1.2
Male	6	7.0
Asian	6	7.0
Female	1	1.2
Male	5	5.8
Other	2	2.3
Female	1	1.2
Male	1	1.2

BROUGHTON HIGH SCHOOL
Dropouts by Gender, Age, Grade,
And Withdrawal Reason
1998-99

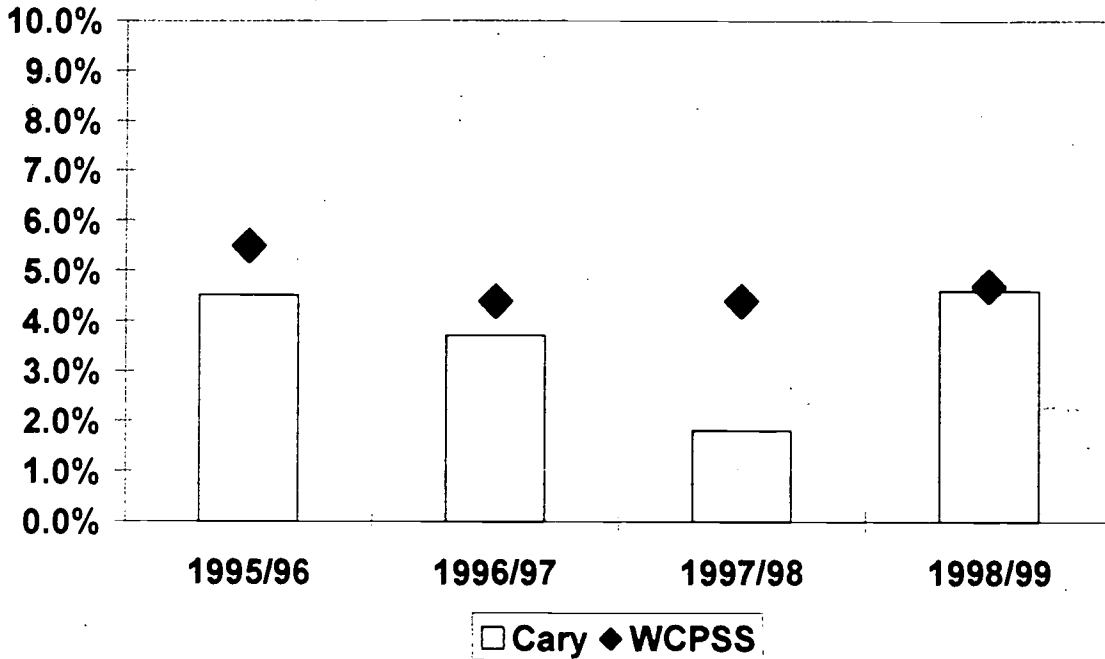
GENDER	Total	Percent
Female	27	31.4
Male	59	68.6
AGE		
Under 15	1	1.2
15 years old	16	18.6
16 years old	18	20.9
17 years old	30	34.9
18 years old	16	18.6
19 years old	4	4.7
Over 19	1	1.2
GRADE		
Grade 9	33	38.4
Grade 10	26	30.2
Grade 11	18	20.9
Grade 12	9	10.5
REASON		
Health Reasons	0	0
Pregnancy	0	0
Marriage	0	0
Choice of Work over School	1	1.2
Substance Abuse	0	0
Incarcerated, Not Enrolled	5	5.8
Employment Necessary	0	0
Unstable Home Environment	0	0
Need to Care for Children	0	0
Runaway	0	0
Moved, No Records Requested	15	17.4
Academic Problems	1	1.2
Discipline Problems	0	0
Long-term Suspension	2	2.3
Attendance Problems	62	72.1

CARY HIGH SCHOOL

Total Dropouts: 95

Dropout Rate: 4.64%

Cary H.S. and WCPSS Dropout Rates: 1995-99



Cary High School Dropouts by Race: 1998 - 1999

RACE	Total	(n=95)
White	58	61.1
Female	27	28.4
Male	31	32.6
Black	25	26.3
Female	10	10.5
Male	15	15.8
Hispanic	8	8.4
Female	1	1.1
Male	7	7.4
Asian	3	3.2
Female	2	2.1
Male	1	1.1
Other	1	1.1
Female	1	1.1
Male	0	0

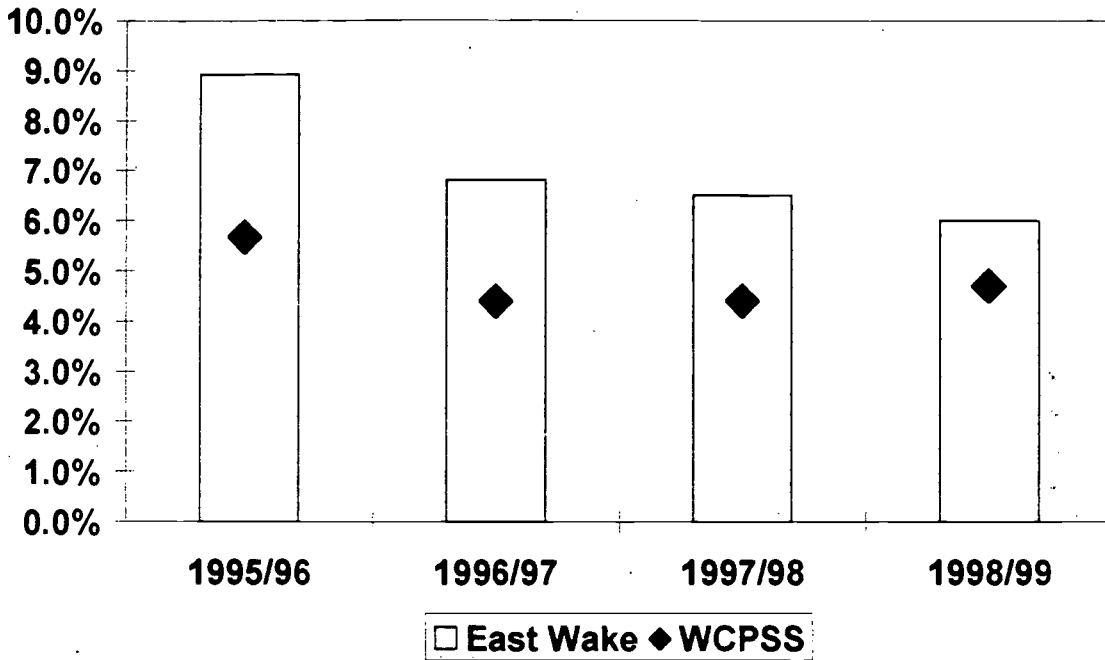
CARY HIGH SCHOOL
Dropouts by Gender, Age, Grade,
And Withdrawal Reason
1998-99

GENDER	Total	Percent
Female	41	43.2
Male	54	56.8
AGE		
Under 15	2	2.1
15 years old	16	16.8
16 years old	33	34.7
17 years old	29	30.5
18 years old	9	9.5
19 years old	5	5.3
Over 19	1	1.1
GRADE		
Grade 9	38	40
Grade 10	29	30.5
Grade 11	22	23.2
Grade 12	6	6.3
REASON		
Health Reasons	0	0
Pregnancy	0	0
Marriage	0	0
Choice of Work over School	29	30.5
Substance Abuse	0	0
Incarcerated, Not Enrolled	0	0
Employment Necessary	1	1.1
Unstable Home Environment	0	0
Need to Care for Children	1	1.1
Runaway	0	0
Moved, No Records Requested	2	2.1
Academic Problems	8	8.4
Discipline Problems	1	1.1
Long-term Suspension	4	4.2
Attendance Problems	48	50.5
Other	1	1.1

EAST WAKE HIGH SCHOOL

Total Dropouts: 106
Dropout Rate: 6.11%

East Wake H.S. and WCPSS Dropout Rates: 1995-99



East Wake High School Dropouts by Race: 1998 - 1999

RACE	Total	(n=106)
White	49	46.2
Female	19	17.9
Male	30	28.3
Black	50	47.2
Female	19	17.9
Male	31	29.2
Hispanic	4	3.8
Female	1	.9
Male	3	2.8
Asian	1	.9
Female	0	0
Male	1	.9
Other	2	1.9
Female	0	0
Male	2	1.9

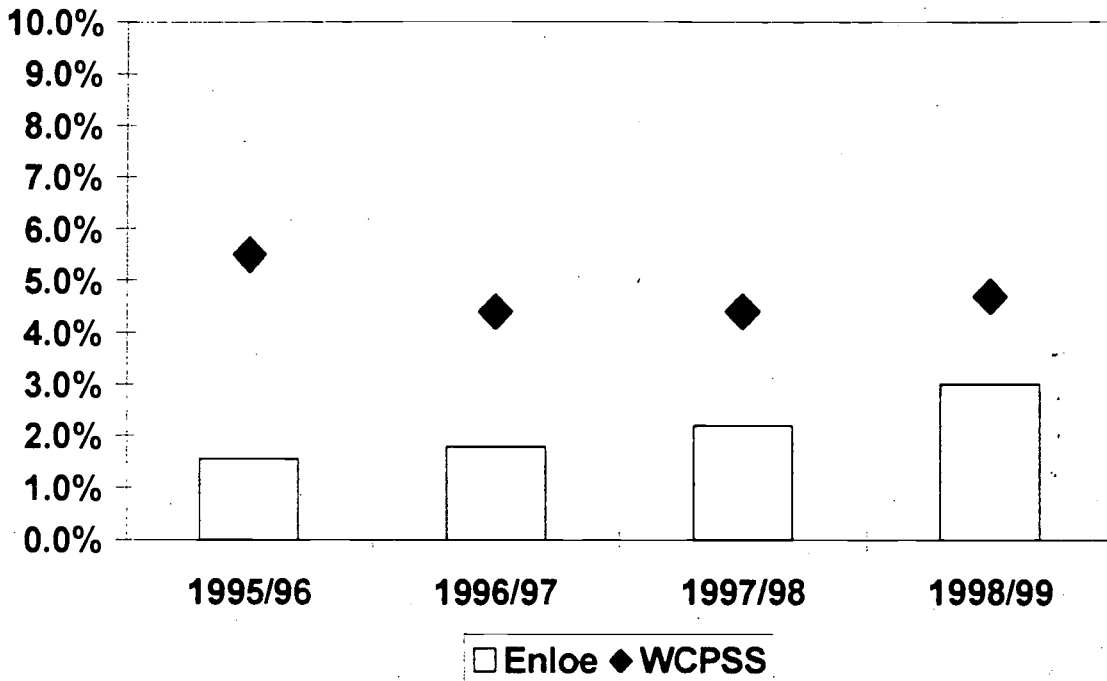
EAST WAKE HIGH SCHOOL
Dropouts by Gender, Age, Grade,
And Withdrawal Reason
1998-99

GENDER	Total	Percent
Female	39	36.8
Male	67	63.2
AGE		
Under 15	3	2.8
15 years old	14	13.2
16 years old	38	35.8
17 years old	31	29.2
18 years old	14	13.2
19 years old	5	4.7
Over 19	1	.9
GRADE		
Grade 9	51	48.1
Grade 10	33	31.1
Grade 11	10	9.4
Grade 12	12	11.3
REASON		
Health Reasons	0	0
Pregnancy	0	0
Marriage	0	0
Choice of Work over School	3	2.8
Substance Abuse	0	0
Incarcerated, Not Enrolled	0	0
Employment Necessary	0	0
Unstable Home Environment	0	0
Need to Care for Children	0	0
Runaway	0	0
Moved, No Records Requested	1	.9
Academic Problems	0	0
Discipline Problems	0	0
Long-term Suspension	14	13.2
Attendance Problems	88	83

ENLOE HIGH SCHOOL

Total Dropouts: 74
Dropout Rate: 3.02%

Enloe H.S. and WCPSS Dropout Rates: 1995-99



Enloe High School Dropouts by Race: 1998 - 1999

RACE	Total	(n=74)
White	12	16.2
Female	4	5.4
Male	8	10.8
Black	62	83.8
Female	19	25.7
Male	43	58.1
Hispanic	0	0
Female	0	0
Male	0	0
Asian	0	0
Female	0	0
Male	0	0
Other	0	0
Female	0	0
Male	0	0

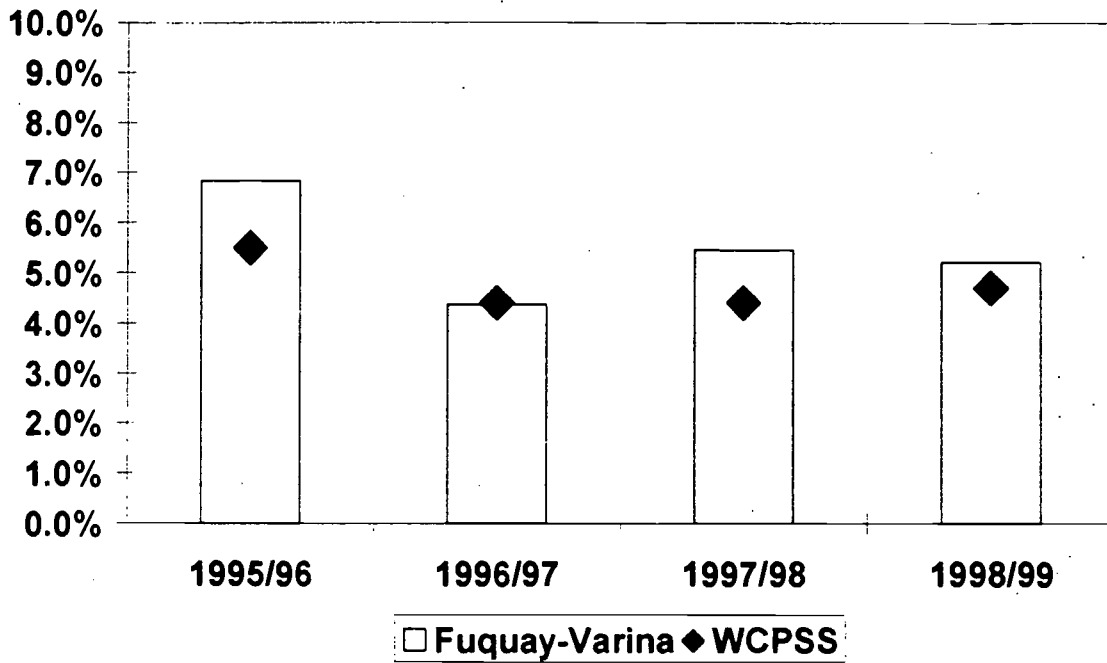
ENLOE HIGH SCHOOL
Dropouts by Gender, Age, Grade,
And Withdrawal Reason
1998-99

GENDER	Total	Percent
Female	23	31.1
Male	51	68.9
AGE		
Under 15	2	2.7
15 years old	8	10.8
16 years old	20	27.0
17 years old	23	31.1
18 years old	15	20.3
19 years old	5	6.8
Over 19	1	1.4
GRADE		
Grade 9	26	35.1
Grade 10	21	28.4
Grade 11	15	20.3
Grade 12	12	16.2
REASON		
Health Reasons	0	0
Pregnancy	1	1.4
Marriage	0	0
Choice of Work over School	0	0
Substance Abuse	0	0
Incarcerated, Not Enrolled	1	1.4
Employment Necessary	0	0
Unstable Home Environment	0	0
Need to Care for Children	0	0
Runaway	0	0
Moved, No Records Requested	0	0
Academic Problems	28	37.8
Discipline Problems	1	1.4
Long-term Suspension	7	9.5
Attendance Problems	36	48.6

FUQUAY-VARINA HIGH SCHOOL

Total Dropouts: 83
Dropout Rate: 5.20%

Fuquay-Varina H.S. and WCPSS Dropout Rates: 1995-99



Fuquay-Varina High School Dropouts by Race: 1998 - 1999

RACE	Total	(n=83)
White	50	60.2
Female	30	36.1
Male	20	24.1
Black	25	30.1
Female	8	9.6
Male	17	20.5
Hispanic	8	9.6
Female	7	8.4
Male	1	1.2
Asian	0	0
Female	0	0
Male	0	0
Other	0	0
Female	0	0
Male	0	0

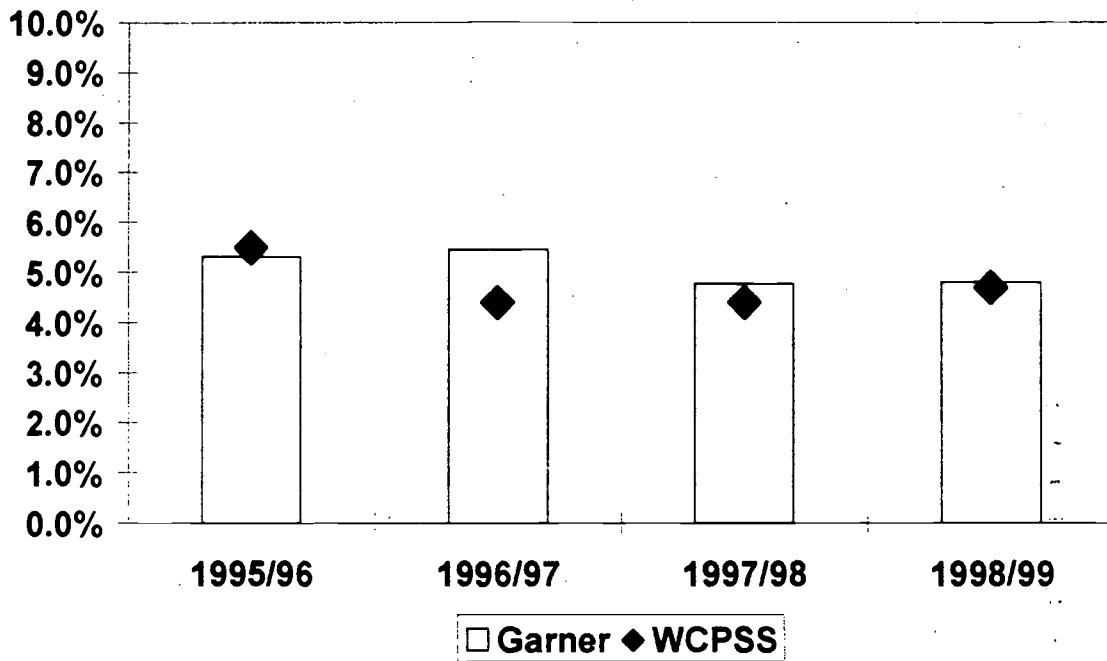
FUQUAY-VARINA HIGH SCHOOL
Dropouts by Gender, Age, Grade,
And Withdrawal Reason
1998-99

GENDER	Total	Percent
Female	45	54.2
Male	38	45.8
AGE		
Under 15	2	2.4
15 years old	16	19.3
16 years old	22	26.5
17 years old	22	26.5
18 years old	18	21.7
19 years old	2	2.4
Over 19	1	1.2
GRADE		
Grade 9	29	34.9
Grade 10	24	28.9
Grade 11	14	16.9
Grade 12	16	19.3
REASON		
Health Reasons	0	0
Pregnancy	0	0
Marriage	0	0
Choice of Work over School	1	1.2
Substance Abuse	0	0
Incarcerated, Not Enrolled	0	0
Employment Necessary	0	0
Unstable Home Environment	0	0
Need to Care for Children	0	0
Runaway	0	0
Moved, No Records Requested	14	16.9
Academic Problems	1	1.2
Discipline Problems	0	0
Long-term Suspension	2	2.4
Attendance Problems	65	78.3

GARNER HIGH SCHOOL

Total Dropouts: 92
Dropout Rate: 4.80%

Garner H.S. and WCPSS Dropout Rates: 1995-99



Garner High School Dropouts by Race: 1998 - 1999

RACE	Total	(n=92)
White	50	54.3
Female	20	21.7
Male	30	32.6
Black	36	39.1
Female	16	17.4
Male	20	21.7
Hispanic	5	5.4
Female	3	3.3
Male	2	2.2
Asian	0	0
Female	0	0
Male	0	0
Other	1	1.1
Female	0	0
Male	1	1.1

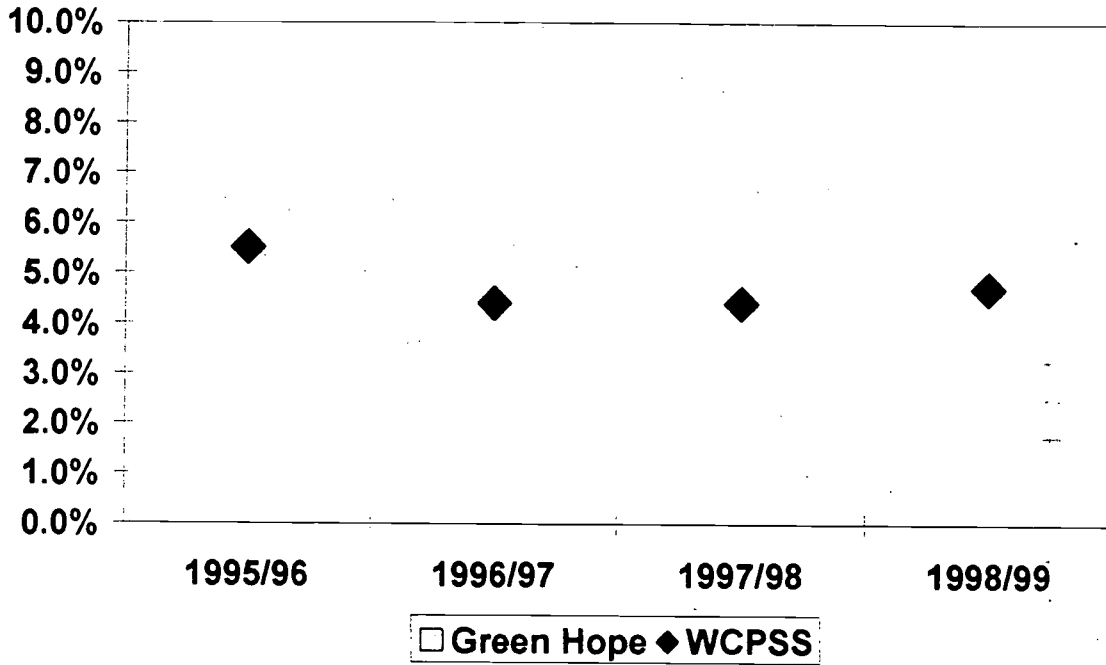
GARNER HIGH SCHOOL
Dropouts by Gender, Age, Grade,
And Withdrawal Reason
1998-99

GENDER	Total	Percent
Female	39	42.4
Male	53	57.6
AGE		
Under 15	1	1.1
15 years old	10	10.9
16 years old	28	30.4
17 years old	34	37
18 years old	14	15.2
19 years old	4	4.3
Over 19	1	1.1
GRADE		
Grade 9	39	42.4
Grade 10	25	27.2
Grade 11	19	20.7
Grade 12	9	9.8
REASON		
Health Reasons	1	1.1
Pregnancy	1	1.1
Marriage	0	0
Choice of Work over School	2	2.2
Substance Abuse	0	0
Incarcerated, Not Enrolled	2	2.2
Employment Necessary	0	0
Unstable Home Environment	0	0
Need to Care for Children	0	0
Runaway	4	4.3
Moved, No Records Requested	1	1.1
Academic Problems	4	4.3
Discipline Problems	4	4.3
Long-term Suspension	10	10.9
Attendance Problems	63	68.5

GREEN HOPE HIGH SCHOOL

Total Dropouts: 0
Dropout Rate: 0%

Green Hope High School and WCPSS Dropout Rate: 1995-99



Green Hope High School Dropouts by Race: 1998 - 1999

RACE	Total	(n=0)
White	0	0
Female	0	0
Male	0	0
Black	0	0
Female	0	0
Male	0	0
Hispanic	0	0
Female	0	0
Male	0	0
Asian	0	0
Female	0	0
Male	0	0
Other	0	0
Female	0	0
Male	0	0

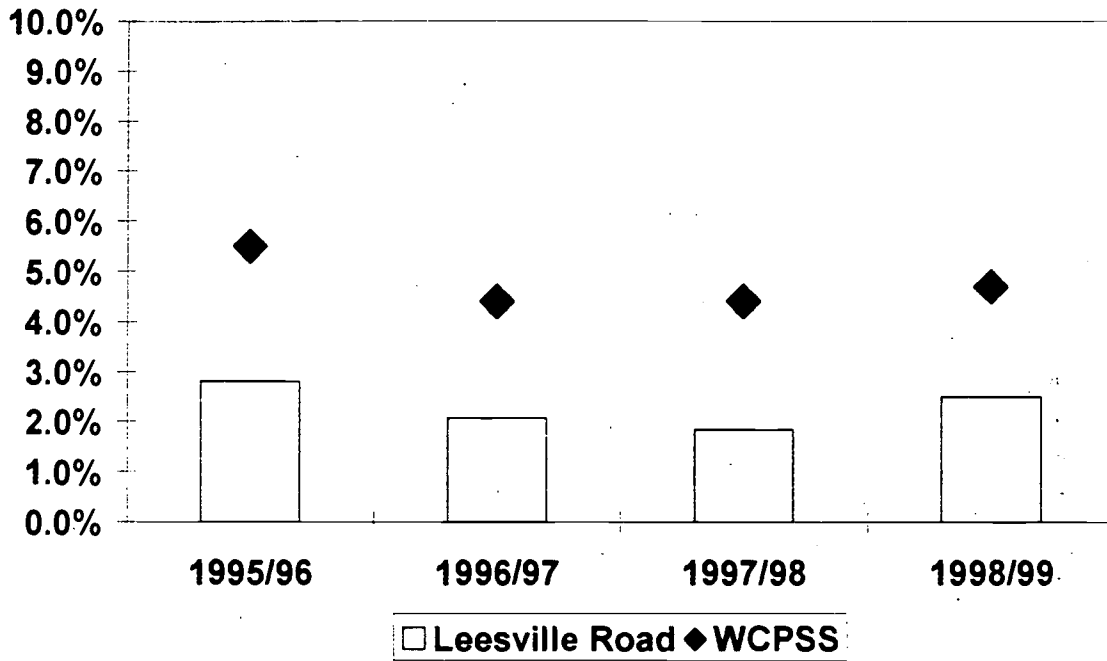
GREEN HOPE HIGH SCHOOL
Dropouts by Gender, Age, Grade,
And Withdrawal Reason
1998-99

GENDER	Total	Percent
Female	0	0
Male	0	0
AGE		
Under 15	0	0
15 years old	0	0
16 years old	0	0
17 years old	0	0
18 years old	0	0
19 years old	0	0
Over 19	0	0
GRADE		
Grade 9	0	0
Grade 10	0	0
Grade 11	0	0
Grade 12	0	0
REASON		
Health Reasons	0	0
Pregnancy	0	0
Marriage	0	0
Choice of Work over School	0	0
Substance Abuse	0	0
Incarcerated, Not Enrolled	0	0
Employment Necessary	0	0
Unstable Home Environment	0	0
Need to Care for Children	0	0
Runaway	0	0
Moved, No Records Requested	0	0
Academic Problems	0	0
Discipline Problems	0	0
Long-term Suspension	0	0
Attendance Problems	0	0

LEESVILLE ROAD HIGH SCHOOL

Total Dropouts: 52
Dropout Rate: 2.48%

Leesville Road H.S. and WCPSS Dropout Rates: 1995-99



Leesville Road High School Dropouts by Race: 1998 - 1999

RACE	Total	(n=52)
White	20	38.5
Female	11	21.2
Male	9	17.3
Black	22	42.3
Female	8	15.4
Male	14	26.9
Hispanic	6	11.5
Female	2	3.8
Male	4	7.7
Asian	3	5.8
Female	0	0
Male	3	5.8
Other	1	1.9
Female	0	0
Male	1	1.9

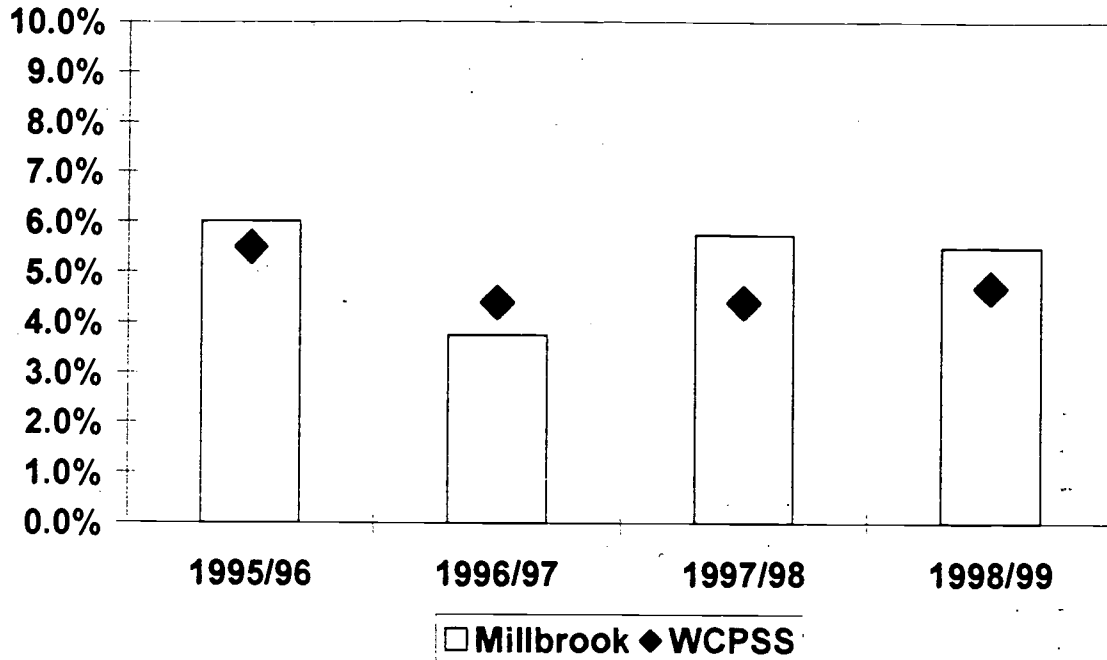
LEESVILLE ROAD HIGH SCHOOL
Dropouts by Gender, Age, Grade,
And Withdrawal Reason
1998-99

GENDER	Total	Percent
Female	21	40.4
Male	31	59.6
AGE		
Under 15	0	0
15 years old	4	7.7
16 years old	9	17.3
17 years old	22	42.3
18 years old	14	26.9
19 years old	3	5.8
Over 19	0	0
GRADE		
Grade 9	10	19.2
Grade 10	15	28.8
Grade 11	14	26.9
Grade 12	13	25
REASON		
Health Reasons	0	0
Pregnancy	0	0
Marriage	0	0
Choice of Work over School	6	11.5
Substance Abuse	0	0
Incarcerated, Not Enrolled	0	0
Employment Necessary	0	0
Unstable Home Environment	0	0
Need to Care for Children	0	0
Runaway	0	0
Moved, No Records Requested	1	1.9
Academic Problems	11	21.2
Discipline Problems	1	1.9
Long-term Suspension	0	0
Attendance Problems	33	63.5

MILLBROOK HIGH SCHOOL

Total Dropouts: 105
Dropout Rate: 5.49%

Millbrook H.S. and WCPSS Dropout Rates: 1995-99



Millbrook High School Dropouts by Race: 1998 - 1999

RACE	Total	(n=105)
White	44	41.9
Female	12	11.4
Male	32	30.5
Black	47	44.8
Female	18	17.1
Male	29	27.6
Hispanic	10	9.5
Female	7	6.7
Male	3	2.9
Asian	2	1.9
Female	1	1
Male	1	1
Other	2	1.9
Female	0	0
Male	2	1.9

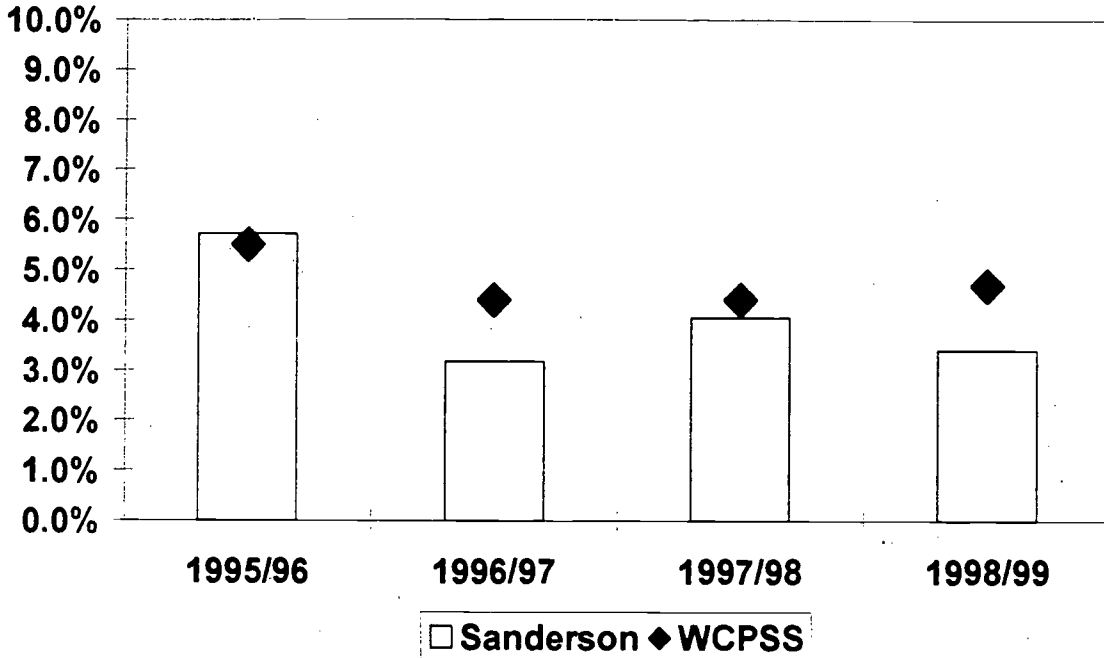
MILLBROOK HIGH SCHOOL
Dropouts by Gender, Age, Grade,
And Withdrawal Reason
1998-99

GENDER	Total	Percent
Female	38	36.2
Male	67	63.8
AGE		
Under 15	1	1
15 years old	12	11.4
16 years old	32	30.5
17 years old	30	28.6
18 years old	22	21
19 years old	7	6.7
Over 19	1	1
GRADE		
Grade 9	45	42.9
Grade 10	23	21.9
Grade 11	21	20
Grade 12	16	15.2
REASON		
Health Reasons	1	1
Pregnancy	0	0
Marriage	0	0
Choice of Work over School	7	6.7
Substance Abuse	0	0
Incarcerated, Not Enrolled	0	0
Employment Necessary	0	0
Unstable Home Environment	1	1
Need to Care for Children	0	0
Runaway	0	0
Moved, No Records Requested	4	3.8
Academic Problems	38	36.2
Discipline Problems	1	1
Long-term Suspension	14	13.3
Attendance Problems	39	37.1

SANDERSON HIGH SCHOOL

Total Dropouts: 67
Dropout Rate: 3.40%

Sanderson H.S. and WCPSS Dropout Rates: 1995-99



Sanderson High School Dropouts by Race: 1998 - 1999

RACE	Total	(n=67)
White	34	50.7
Female	14	20.9
Male	20	29.9
Black	29	43.3
Female	8	11.9
Male	21	31.3
Hispanic	2	3
Female	0	0
Male	2	3
Asian	1	1.5
Female	1	1.5
Male	0	0
Other	1	1.5
Female	0	0
Male	1	1.5

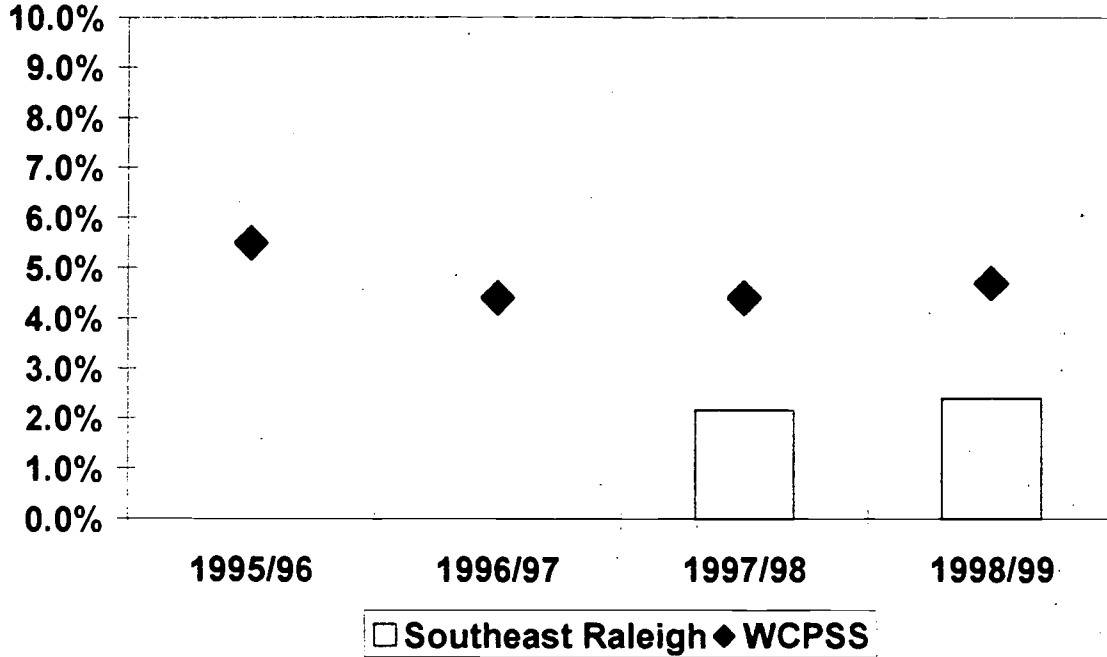
SANDERSON HIGH SCHOOL
Dropouts by Gender, Age, Grade,
And Withdrawal Reason
1998-99

GENDER	Total	Percent
Female	23	34.3
Male	44	65.7
AGE		
Under 15	0	0
15 years old	1	1.5
16 years old	29	43.3
17 years old	19	28.4
18 years old	14	20.9
19 years old	4	6
Over 19	0	0
GRADE		
Grade 9	28	41.8
Grade 10	14	20.9
Grade 11	16	23.9
Grade 12	9	13.4
REASON		
Health Reasons	1	1.5
Pregnancy	0	0
Marriage	0	0
Choice of Work over School	1	1.5
Substance Abuse	0	0
Incarcerated, Not Enrolled	3	4.5
Employment Necessary	0	0
Unstable Home Environment	0	0
Need to Care for Children	0	0
Runaway	0	0
Moved, No Records Requested	0	0
Academic Problems	5	7.5
Discipline Problems	0	0
Long-term Suspension	7	10.4
Attendance Problems	47	70.1
Other	3	4.5

SOUTHEAST RALEIGH HIGH SCHOOL

Total Dropouts: 42
Dropout Rate: 2.42%

Southeast Raleigh H.S. and WCPSS Dropout Rates: 1995-99



Southeast Raleigh High School Dropouts by Race: 1998 - 1999

RACE	Total	(n=42)
White	21	50
Female	7	16.7
Male	14	33.3
Black	19	45.2
Female	6	2.4
Male	13	31
Hispanic	0	0
Female	0	0
Male	0	0
Asian	2	4.8
Female	2	4.8
Male	0	0
Other	0	0
Female	0	0
Male	0	0

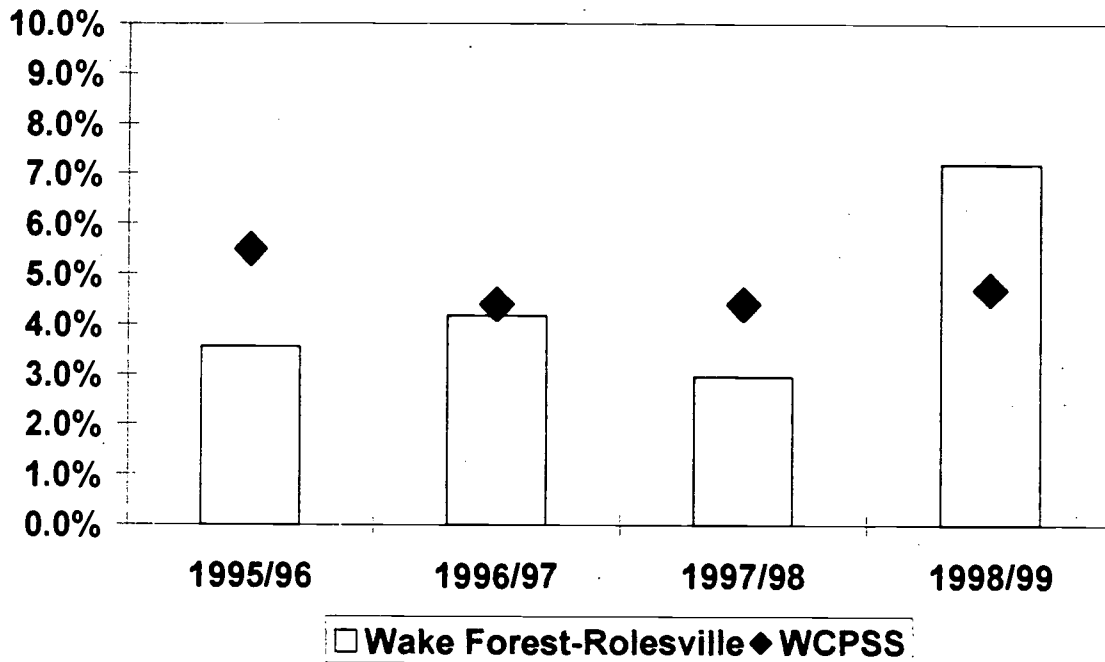
SOUTHEAST RALEIGH HIGH SCHOOL
Dropouts by Gender, Age, Grade,
And Withdrawal Reason
1998-99

GENDER	Total	Percent
Female	15	35.7
Male	27	64.3
AGE		
Under 15	0	0
15 years old	1	2.4
16 years old	13	31
17 years old	13	31
18 years old	11	26.2
19 years old	3	7.1
Over 19	1	2.4
GRADE		
Grade 9	7	16.7
Grade 10	15	35.7
Grade 11	12	28.6
Grade 12	8	19
REASON		
Health Reasons	1	2.4
Pregnancy	0	0
Marriage	0	0
Choice of Work over School	0	0
Substance Abuse	0	0
Incarcerated, Not Enrolled	1	2.4
Employment Necessary	0	0
Unstable Home Environment	0	0
Need to Care for Children	0	0
Runaway	0	0
Moved, No Records Requested	1	2.4
Academic Problems	16	38.1
Discipline Problems	0	0
Long-term Suspension	1	2.4
Attendance Problems	22	52.4

WAKE FOREST-ROLESVILLE HIGH SCHOOL

Total Dropouts: 115
Dropout Rate: 7.15%

Wake Forest-Rolesville H.S. and WCPSS Dropout Rates: 1995-99



Wake Forest-Rolesville High School Dropouts by Race: 1998 - 1999

RACE	Total	(n=115)
White	74	64.3
Female	23	20
Male	51	44.3
Black	38	33
Female	13	11.3
Male	25	21.7
Hispanic	1	.9
Female	1	.9
Male	0	0
Asian	0	0
Female	0	0
Male	0	0
Other	2	1.7
Female	1	.9
Male	1	.9

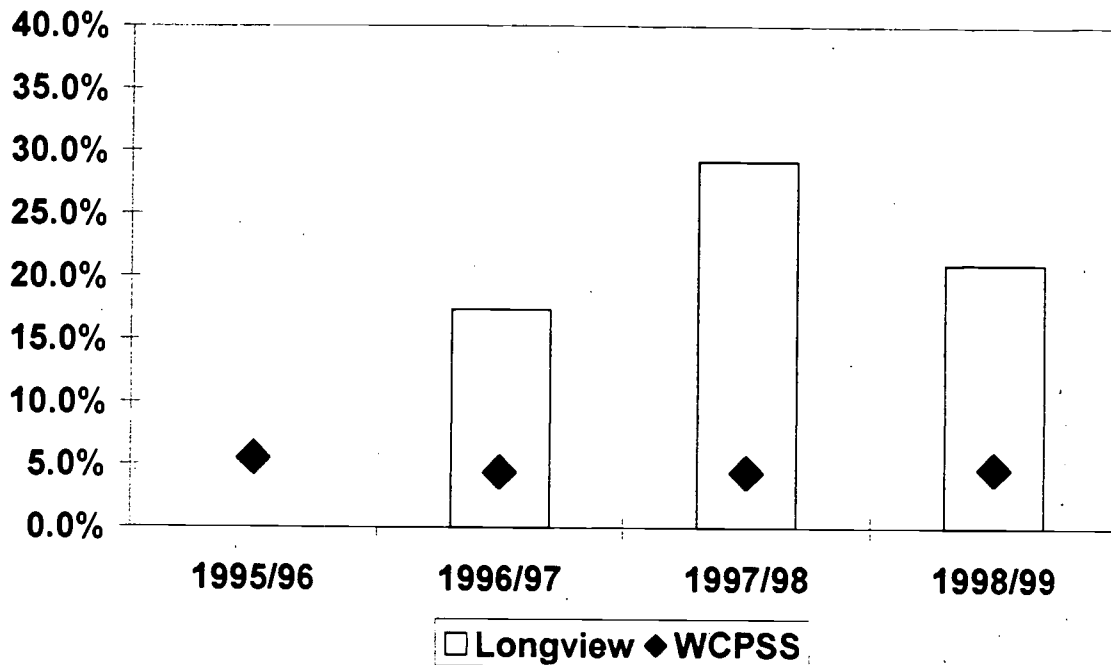
WAKE FOREST-ROLESVILLE HIGH SCHOOL
Dropouts by Gender, Age, Grade,
And Withdrawal Reason
1998-99

GENDER	Total	Percent
Female	38	33
Male	77	67
AGE		
Under 15	1	.9
15 years old	11	9.6
16 years old	44	38.3
17 years old	36	31.3
18 years old	18	15.7
19 years old	5	4.3
Over 19	0	0
GRADE		
Grade 9	48	41.7
Grade 10	20	17.4
Grade 11	26	22.6
Grade 12	21	18.3
REASON		
Health Reasons	0	0
Pregnancy	1	.9
Marriage	0	0
Choice of Work over School	0	0
Substance Abuse	0	0
Incarcerated, Not Enrolled	0	0
Employment Necessary	0	0
Unstable Home Environment	0	0
Need to Care for Children	0	0
Runaway	0	0
Moved, No Records Requested	1	.9
Academic Problems	28	24.3
Discipline Problems	0	0
Long-term Suspension	0	0
Attendance Problems	83	72.1
Other	2	1.7

LONGVIEW HIGH SCHOOL

Total Dropouts: 10
Dropout Rate: 21.0%

High School and WCPSS Dropout Rate: 1995 - 1999



Longview High School Dropouts by Race: 1998 - 1999

RACE	Total	(n=10)
White	3	30
Female	0	0
Male	3	30
Black	7	70
Female	1	10
Male	6	60
Hispanic	0	0
Female	0	0
Male	0	0
Asian	0	0
Female	0	0
Male	0	0
Other	0	0
Female	0	0
Male	0	0

LONGVIEW HIGH SCHOOL
Dropouts by Gender, Age, Grade,
And Withdrawal Reason
1998-99

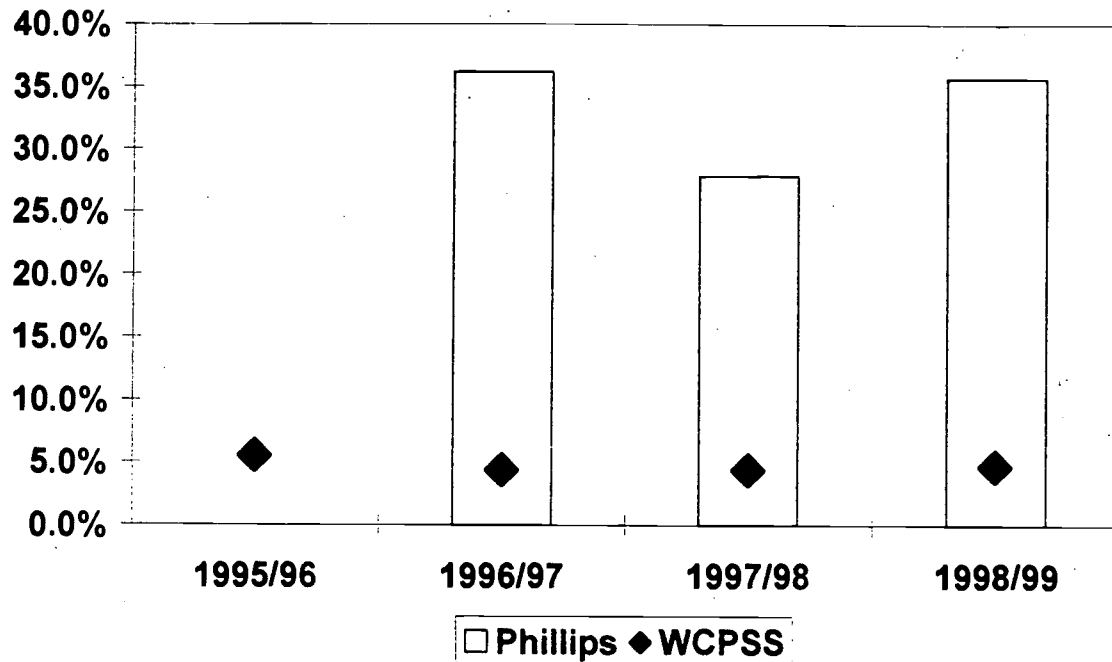
GENDER	Total	Percent
Female	1	10
Male	9	90
AGE		
Under 15	0	0
15 years old	0	0
16 years old	5	50
17 years old	2	20
18 years old	3	30
19 years old	0	0
Over 19	0	0
GRADE		
Grade 9	4	40
Grade 10	5	50
Grade 11	1	10
Grade 12	0	0
REASON		
Health Reasons	0	0
Pregnancy	0	0
Marriage	0	0
Choice of Work over School	0	0
Substance Abuse	0	0
Incarcerated, Not Enrolled	0	0
Employment Necessary	0	0
Unstable Home Environment	0	0
Need to Care for Children	0	0
Runaway	0	0
Moved, No Records Requested	0	0
Academic Problems	0	0
Discipline Problems	0	0
Long-term Suspension	0	0
Attendance Problems	10	100
Expulsion	0	0
School Not Meeting Needs	0	0
Other	0	0

BEST COPY AVAILABLE

MARY PHILLIPS HIGH SCHOOL

Total Dropouts: 135
Dropout Rate: 41.99%

High School and WCPSS Dropout Rate: 1995 - 1999



Phillips High School Dropouts by Race: 1998 - 1999

RACE	Total	(n=135)
White	31	23
Female	15	11.1
Male	16	13.9
Black	102	75.6
Female	66	48.9
Male	36	26.7
Hispanic	2	1.5
Female	1	.7
Male	1	.7
Asian	0	0
Female	0	0
Male	0	0
Other	0	0
Female	0	0
Male	0	0

MARY PHILLIPS HIGH SCHOOL
Dropouts by Gender, Age, Grade,
And Withdrawal Reason
1998-99

GENDER	Total	Percent
Female	82	60.7
Male	53	39.3
AGE		
Under 15	0	0
15 years old	11	8.1
16 years old	27	20
17 years old	50	37
18 years old	32	23.7
19 years old	12	8.9
Over 19	2	1.5
GRADE		
Grade 9	52	38.5
Grade 10	30	22.2
Grade 11	34	25.2
Grade 12	19	14.1
REASON		
Health Reasons	3	2.2
Pregnancy	2	1.5
Marriage	0	0
Choice of Work over School	25	18.5
Substance Abuse	0	0
Incarcerated, Not Enrolled	0	0
Employment Necessary	0	0
Unstable Home Environment	3	2.2
Need to Care for Children	2	1.5
Runaway	5	3.7
Moved, No Records Requested	14	10.4
Academic Problems	0	0
Discipline Problems	5	3.7
Long-term Suspension	0	0
Attendance Problems	76	56.3

ATTACHMENT 3

WCPSS PROCEDURES FOR COLLECTING AND REPORTING DROPOUT DATA

Date	Activity	Responsibilities
May	Provide all SIMS technicians and school counselors with a list of NCDPI codes for dropout reasons.	<ul style="list-style-type: none"> • Information Systems distributes list. (Dropout Prevention Specialist)
June	<p>At the end of the reporting year, but prior to the SIMS operator running the year-end process:</p> <p>SIMS technicians run Report 153 (<i>Dropout Summary</i>) which provides a list of W2 and W2A students to compare against dropout list that has been maintained by the school for the year.</p>	<ul style="list-style-type: none"> • Information Systems collects SIMS 153 reports from all schools, builds a single Excel file with this data, and provides E&R with this data on disk. • E&R reviews Excel file for errors (e.g., fields with missing data; students incorrectly recorded as previous dropouts). • E&R notifies SIMS technicians of <u>corrections to be made</u> (e.g., students with missing or incorrect data).
September (day 21 of school year)	SIMS technicians run Report 154 (<i>Previous vs. Current Year Enrollment Status Roster</i>), and track all students without a current year enrollment (schools may use this report as their official <i>School Leaver Roster</i>).	<ul style="list-style-type: none"> • Information Systems collects SIMS 154 reports from all schools, builds a single Excel file with this data, and provides E&R with this data on disk. • E&R submits RAP to Information Systems to determine if students not returning to base school have enrolled at any other WCPSS school in the period between Day 1 and Day 20. • E&R notifies SIMS technicians of corrections to be made (e.g., students reported as dropouts but found to be enrolled at another WCPSS school, or students not enrolled in current year but not reported as dropouts by previous year school).

October	SIMS technicians run Report 153 (<i>Official Dropout Count</i>) and Report 156 (<i>Official Dropout Count – Students at Risk Annual Report</i>) and submit this data to Information Systems.	The official dropout reports are run at each school early in October after all corrections have been made: <ul style="list-style-type: none"> • Corrections for incorrect data; • Corrections for students enrolled (or not) at other WCPSS schools; • Corrections for community college enrollment; and • Other errors identified by E&R.
October	Information Systems runs dropout build for WCPSS and provides disk copy to E&R.	<ul style="list-style-type: none"> • E&R verifies dropout build for accuracy and notifies Information Systems if corrections need to be made (if corrections are necessary, this will require the individual school(s) to make corrections, run their dropout build again, and resubmit this to Information Systems, which in turn must again run the dropout build for the school system).
October	Information Systems electronically transmits dropout data to NCDPI and provides disk copy to E&R	<ul style="list-style-type: none"> • E&R maintains copy of dropout data with data from previous years.

References

Dropout Data Report 1998-99, Public Schools of North Carolina, State Board of Education, Department of Public Instruction, January 2000.

WCPSS School Profile Reports, 1993-94 to 1998-99. Wake County Public School System, Department of Evaluation and Research.

1997-1998 Dropout Report, Report No. 00.10, Wake County Public School System, Department of Evaluation and Research, November 1999.

1998 - 1999 Dropout Report

Author

Daniel L. Howard
Evaluation Specialist

Contributing Staff

Nancy Baenen
Director of Accountability

Donna Knott
Information Systems Technician

February 2000
E&R Report No. 00.13

**Department of Evaluation and Research
Wake County Public School System**



U.S. Department of Education
Office of Educational Research and Improvement (OERI)
National Library of Education (NLE)
Educational Resources Information Center (ERIC)



NOTICE

Reproduction Basis



This document is covered by a signed "Reproduction Release (Blanket)" form (on file within the ERIC system), encompassing all or classes of documents from its source organization and, therefore, does not require a "Specific Document" Release form.



This document is Federally-funded, or carries its own permission to reproduce, or is otherwise in the public domain and, therefore, may be reproduced by ERIC without a signed Reproduction Release form (either "Specific Document" or "Blanket").